

WELCOME TO NICHELCROM ACCIAI INOX SPA

NICHELCROM is market leader in stainless steel coils and plates business.

In this form we indicate main safety regulations to be fully followed during your stay in the site.

In order to grant general safety for everybody we kindly ask you to strictly comply with them.

We thank you for your cooperation.

SAFETY REGULATIONS

Visitors and personnel must follow below mentioned regulations :

- Register yourself and sign up while entering in the factory with our staff;
- Marked pedestrians routes must be used ;
- Pay attention to fork lift, motor vehicles and suspended loads ;
- Safety regulations marked on panels – inside the factory – must be followed ;
- PPE (Personal Protective Equipment) will be provided in case of potential safety risks;
- Smoking and using flames is forbidden in the whole site;
- Stand under suspended loads and nearby motor vehicles is forbidden.

Truck drivers must follow below mentioned regulations :

- Factory opening hours are from 8.00 to 12.00 and from 13.30 to 17.30 ;
- Stop the truck inside Via Trento is forbidden, roadway sides must be occupied;
- Our Staff instructions must be fully followed ;
- Drivers are required to submit all necessary documents while signing up at shipping office;
- **Switch off vehicle** while stop the truck at shipping office and parking areas;
- Inside the factory area speed limit is **10 km/h**;
- Routes indicated by **traffic signs, horizontally and vertically, must be followed**;
- **Stop the truck only inside the specific areas identified by P1, P2 and P3.** Follow the indications of internal personnel;
- During loading/unloading stay at the drive place or stand close to the truck **at a minimum distance of 2 mt from the fork lift moving area**; If the load is inside the factory stay in the pedestrian areas and follow the indication of internal personnel;
- If loading is made externally **stop the truck in the specific areas identified by P1, P2 and P3** and follow the indications of internal personnel;
- **Any way is strictly forbidden to stay on the loading floor of the truck.**

EMERGENCY PROCEDURES

- In case of evacuation, loud alarm signal will sound;
- It is strictly necessary to reach assembly point indicated in site plan through safety routes;
- Drivers are requested to stop loading/unloading operations, make the vehicle safe and quickly reach the assembly point.

TRUCK ROUTE INSIDE NICHELCROM AREAS

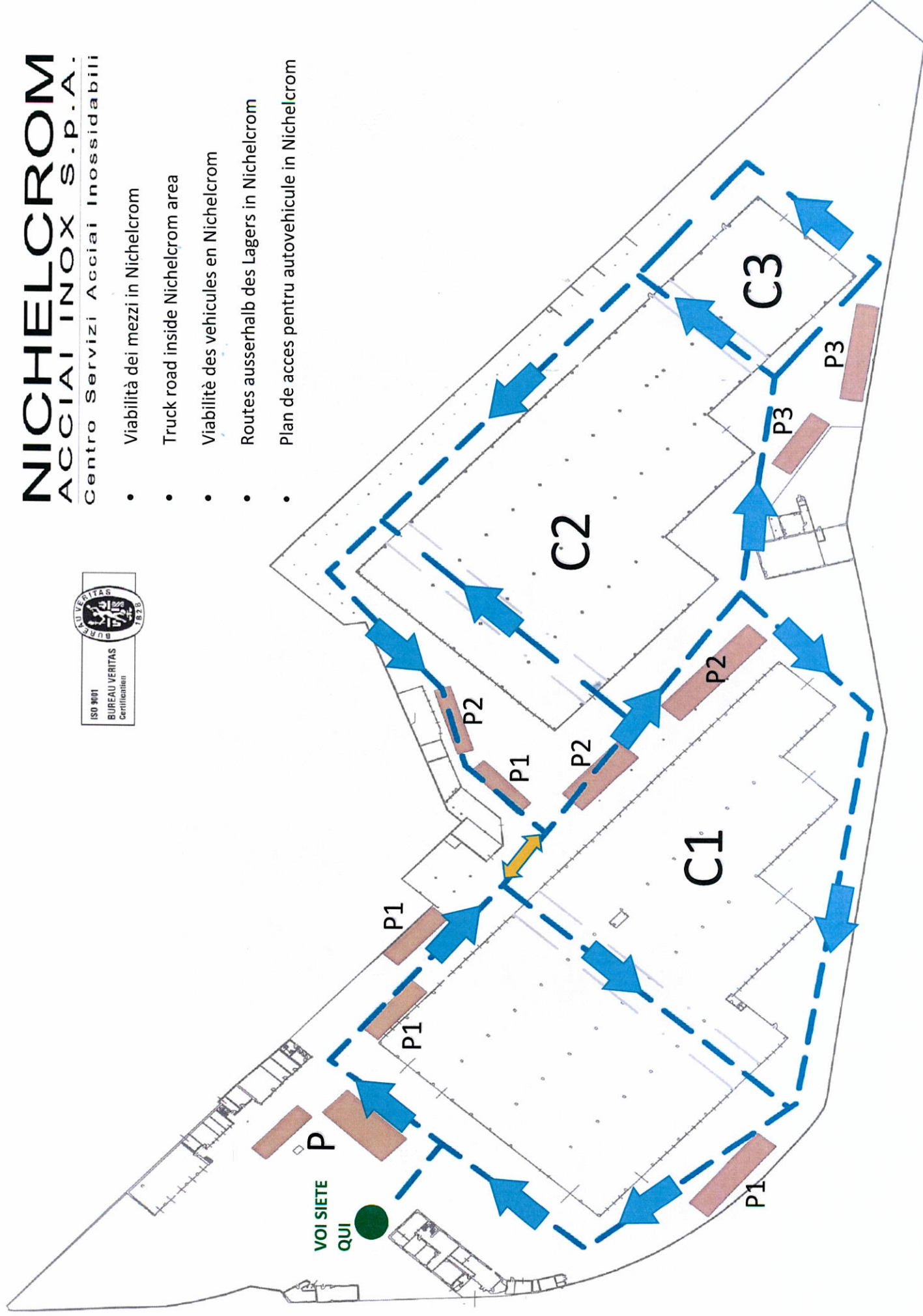
Take vision of the site map on the back of this form.

NICHELCROM ACCIAI INOX S.p.A.

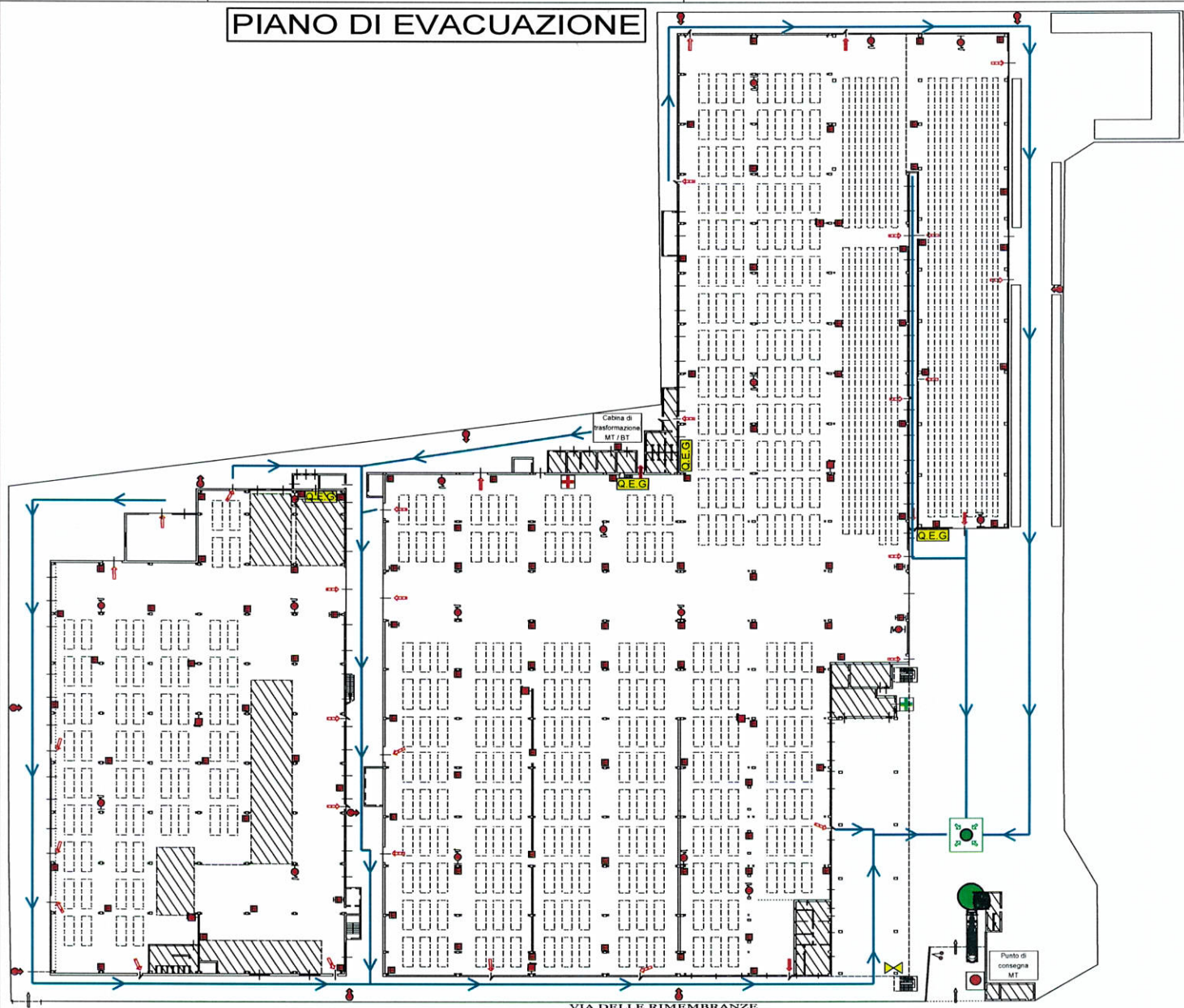
Centro Servizi Acciai Inossidabili



- Viabilità dei mezzi in Nichelcrom
- Truck road inside Nichelcrom area
- Viabilité des véhicules en Nichelcrom
- Routes ausserhalb des Lagers in Nichelcrom
- Plan de acces pentru autovehicule in Nichelcrom



PIANO DI EVACUAZIONE



NICHEL CROM Acciai Inox S.p.A. Viale delle Rimembranze n. 62		COMUNE DI SESTO SAN GIOVANNI (MI)		STUDIO TECNICO GEOM. ANGELO CALVI ING. ELENA CALVI <small>(responsabile tecnico e redattore)</small>
USCITA DI SICUREZZA ORIZZONTALE	ESTINTORE PORTATILE	VOI SIETE QUI	PUNTO DI RITROVO	MANICETTA PER IDRANTE SOPRASUOLO
VIA DI FUGA	Q.E.G. QUADRO ELETTRICO GENERALE	IDRANTE A CASSETTA	IDRANTE SOPRASUOLO	112 - N U E - NUMERO UNICO EMERGENZA
INFIRMERIA	CASSETTA PRIMO SOCCORSO	PULSANTE DI SGANCIO TENSIONE ELETTRICA	VALVOLA DI INTERCETTAZIONE GAS	